

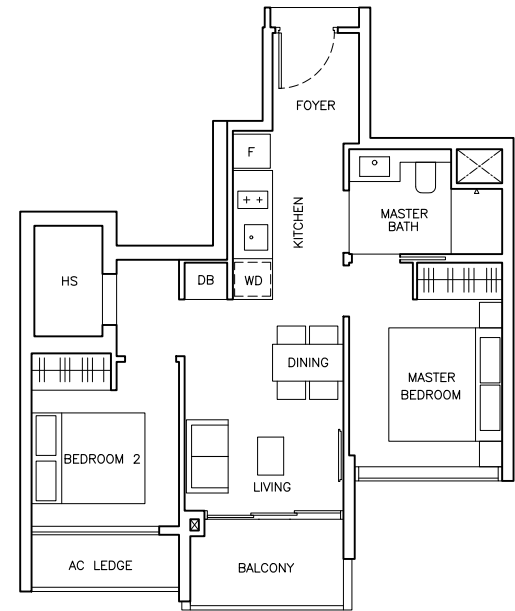
# 2 BEDROOM CLASSIC

## TYPE B1

61 sqm (657 sqft)

MIRRORED

<b>BLOCK 2</b>	<b>BLOCK 2</b>
#02-01 TO #04-01	#02-07 TO #04-07
<b>BLOCK 4</b>	<b>BLOCK 4</b>
#02-08 TO #04-08	#02-14 TO #04-14
<b>BLOCK 6</b>	<b>BLOCK 6</b>
#02-15 TO #04-15	#02-21 TO #04-21



# 2 BEDROOM CLASSIC

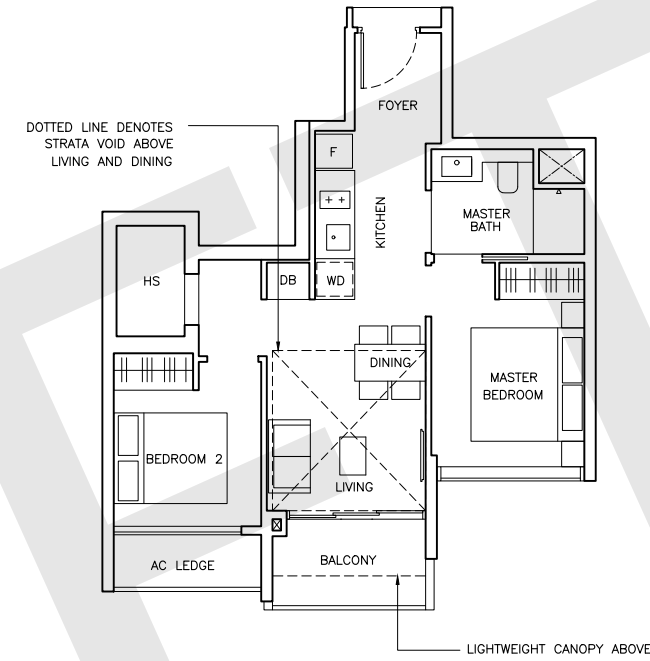
## TYPE B1(PH)

70 sqm (753 sqft)

Strata void area of 9 sqm / 96 sqft above living and dining with high volume ceiling of 4600mm high.

MIRRORED

<b>BLOCK 2</b>	<b>BLOCK 2</b>
#05-07	#05-01
<b>BLOCK 4</b>	<b>BLOCK 4</b>
#05-14	#05-08
<b>BLOCK 6</b>	<b>BLOCK 6</b>
#05-21	#05-15

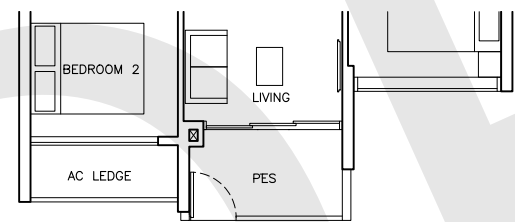


## TYPE B1(p)

61 sqm (657 sqft)

MIRRORED

<b>BLOCK 2</b>	<b>BLOCK 2</b>
#01-01	#01-07
<b>BLOCK 6</b>	<b>BLOCK 6</b>
#01-15	#01-21

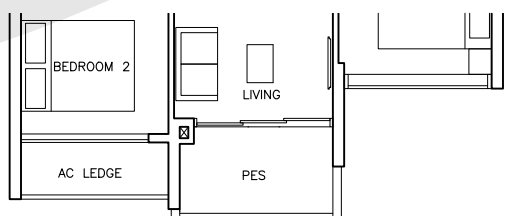


## TYPE B1a(p)

61 sqm (657 sqft)

MIRRORED

<b>BLOCK 4</b>	<b>BLOCK 4</b>
#01-08	#01-14

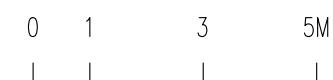


### NOTE

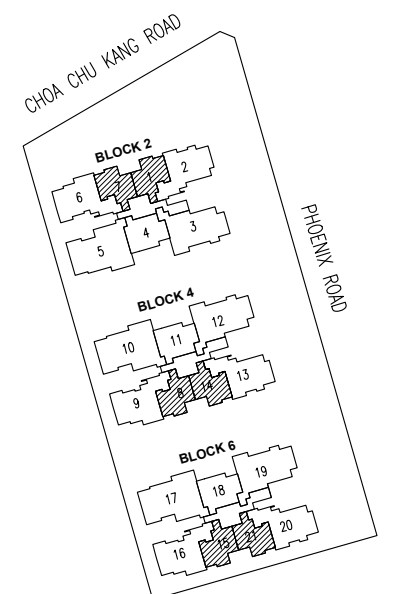
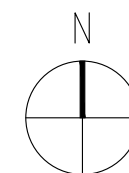
- Area includes AC ledge, balcony, private enclosed space(PES) and strata void (where applicable).
- The above plans and illustrations are subject to change as may be required or approved by the relevant authorities.
- All floor areas are approximate only and subject to final survey.
- Please refer to key plan for orientation.
- Service voids, RC ledge and RC trellis are excluded from strata area.
- The balcony shall not be enclosed. Only approved balcony screens are to be used. For an illustration of the approved balcony screen, please refer to page xx of this brochure.

### LEGEND

- WD - Washer cum Dryer
- F - Fridge
- DB - Electrical Distribution Board
- ST - Store
- HS - Household Shelter
- AC Ledge - Air Conditioner Ledge



SCALE



KEY PLAN

NOT TO SCALE

# 2 BEDROOM DELUXE

## TYPE B2

67 sqm (721 sqft)

MIRRORED

### BLOCK 4

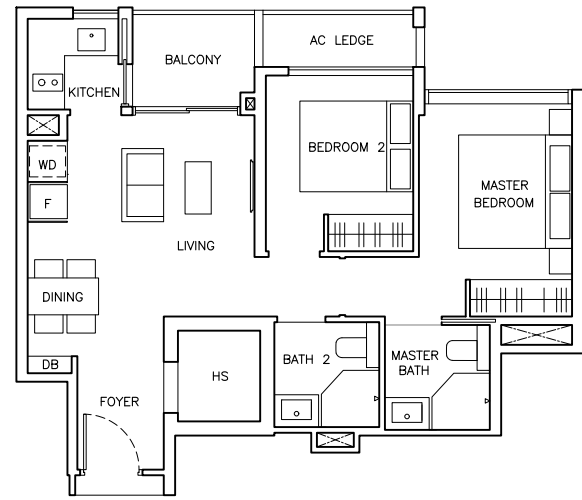
#02-11 TO #04-11

### BLOCK 2

#02-04 TO #04-04

### BLOCK 6

#02-18 TO #04-18



# 2 BEDROOM DELUXE

## TYPE B2(PH)

76 sqm (818 sqft)

Strata void area of 9 sqm / 97 sqft above living with high volume ceiling of 4600mm high.

MIRRORED

### BLOCK 2

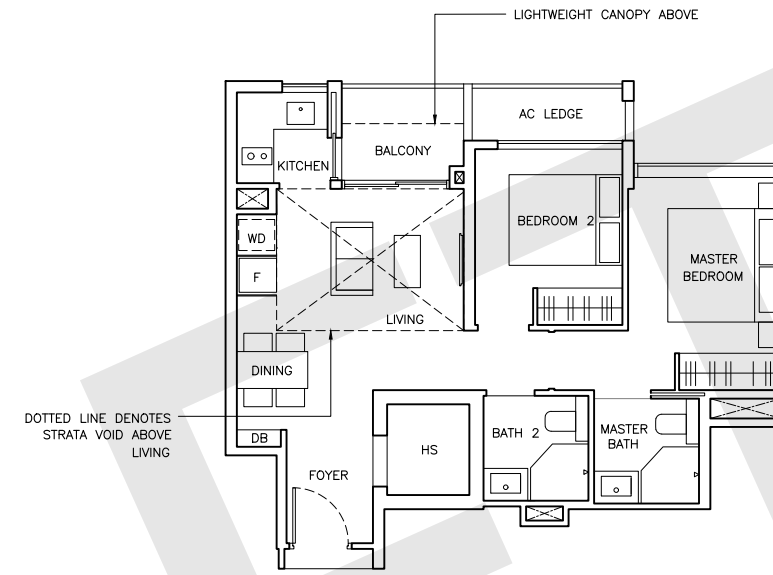
#05-04

### BLOCK 4

#05-11

### BLOCK 6

#05-18



## TYPE B2(p)

67 sqm (721 sqft)

MIRRORED

### BLOCK 4

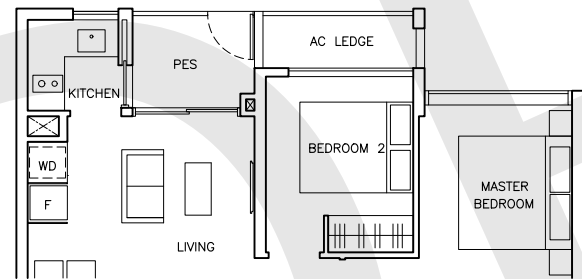
#01-11

### BLOCK 2

#01-04

### BLOCK 6

#01-18



### NOTE

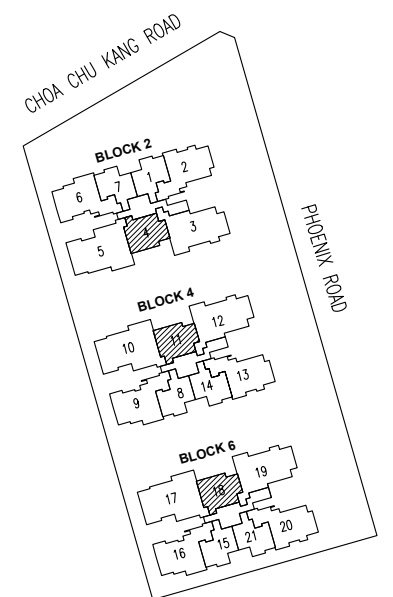
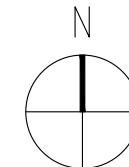
- Area includes AC ledge, balcony, private enclosed space(PES) and strata void (where applicable).
- The above plans and illustrations are subject to change as may be required or approved by the relevant authorities.
- All floor areas are approximate only and subject to final survey.
- Please refer to key plan for orientation.
- Service voids, RC ledge and RC trellis are excluded from strata area.
- The balcony shall not be enclosed. Only approved balcony screens are to be used. For an illustration of the approved balcony screen, please refer to page xx of this brochure.

### LEGEND

- WD - Washer cum Dryer
- F - Fridge
- DB - Electrical Distribution Board
- ST - Store
- HS - Household Shelter
- AC Ledge - Air Conditioner Ledge



### SCALE



### KEY PLAN

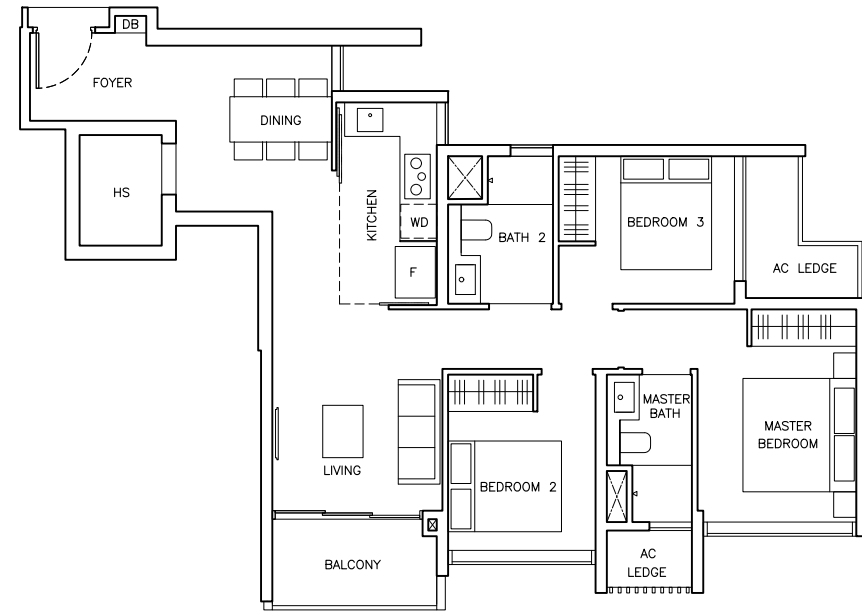
NOT TO SCALE

# 3 BEDROOM CLASSIC

**TYPE C1**  
94 sqm (1012 sqft)

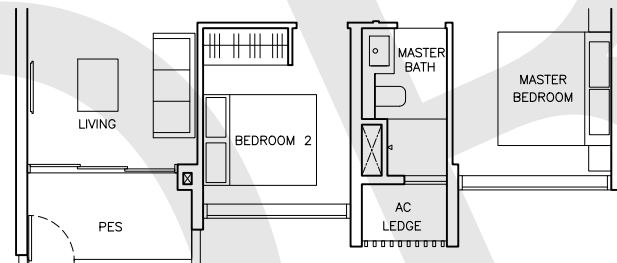
**BLOCK 4** #02-13 TO #04-13  
**BLOCK 6** #02-20 TO #04-20

**MIRRORED**  
**BLOCK 2** #02-02 TO #04-02



**TYPE C1(p)**  
94 sqm (1012 sqft)

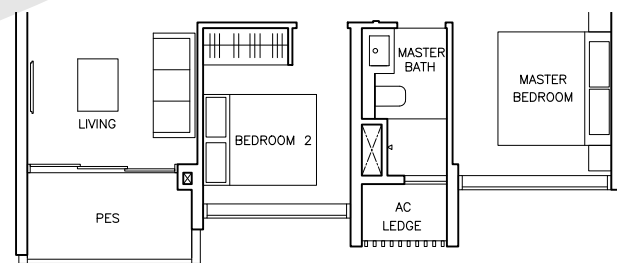
**BLOCK 6** #01-20



**TYPE C1a(p)**  
94 sqm (1012 sqft)

**BLOCK 4** #01-13  
**BLOCK 2** #01-02

**MIRRORED**

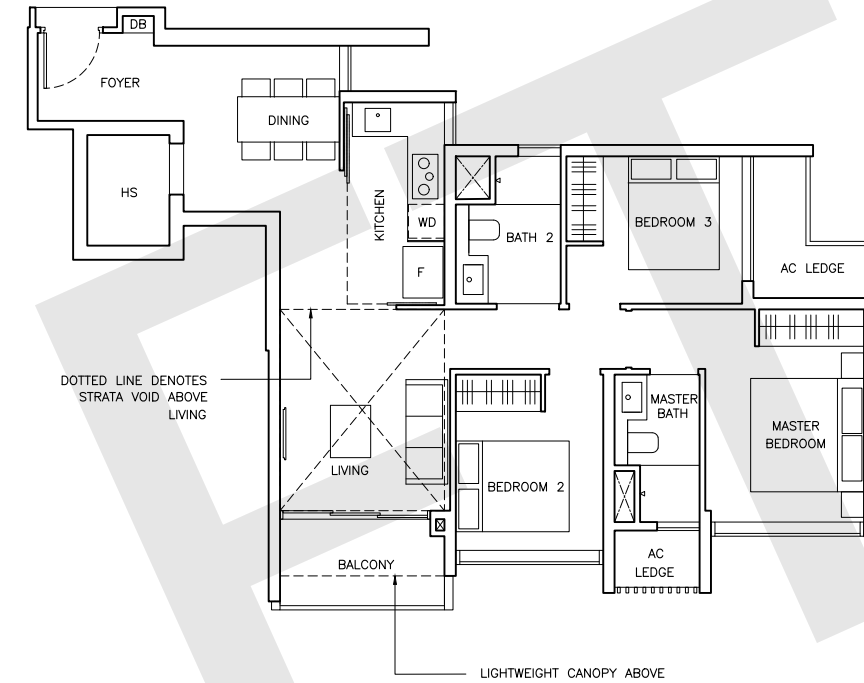


# 3 BEDROOM CLASSIC

**TYPE C1(PH)**  
106 sqm (1141 sqft)

Strata void area of 12 sqm / 129 sqft above living with high volume ceiling of 4600mm high.

**MIRRORED**  
**BLOCK 2** #05-02  
**BLOCK 4** #05-13  
**BLOCK 6** #05-20



### NOTE

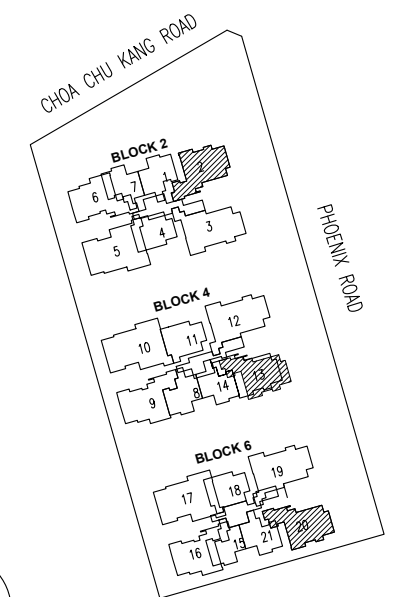
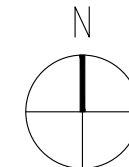
- Area includes AC ledge, balcony, private enclosed space(PES) and strata void (where applicable).
- The above plans and illustrations are subject to change as may be required or approved by the relevant authorities.
- All floor areas are approximate only and subject to final survey. Please refer to key plan for orientation.
- Service voids, RC ledge and RC trellis are excluded from strata area.
- The balcony shall not be enclosed. Only approved balcony screens are to be used. For an illustration of the approved balcony screen, please refer to page xx of this brochure.

### LEGEND

- WD - Washer cum Dryer
- F - Fridge
- DB - Electrical Distribution Board
- ST - Store
- HS - Household Shelter
- AC Ledge - Air Conditioner Ledge



**SCALE**



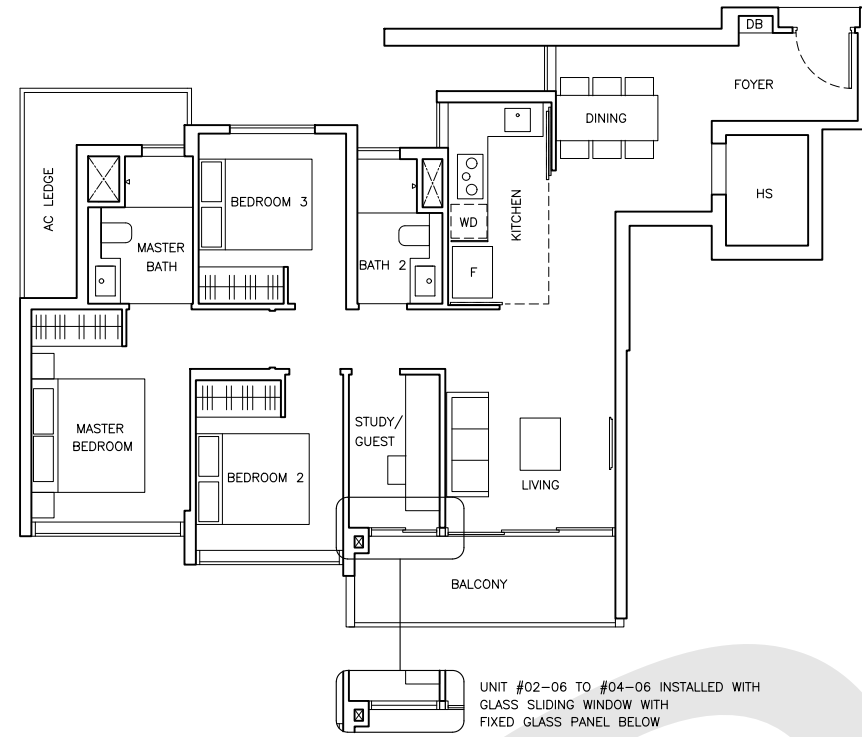
**KEY PLAN**

NOT TO SCALE

TYPE C2

103 sqm (1109 sqft)

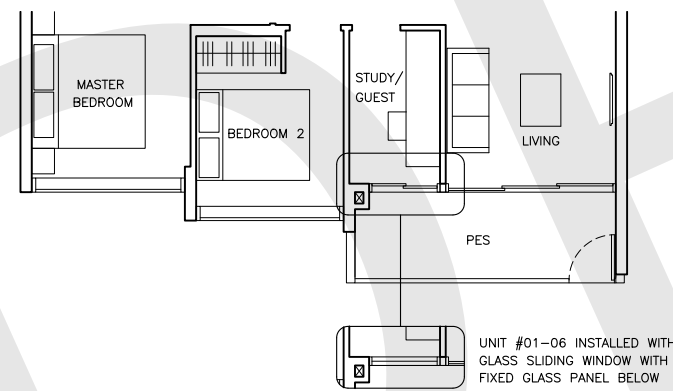
**MIRRORED**  
**BLOCK 4** #02-09 TO #04-09  
**BLOCK 2** #02-06 TO #04-06  
**BLOCK 6** #02-16 TO #04-16



TYPE C2(p)

103 sqm (1109 sqft)

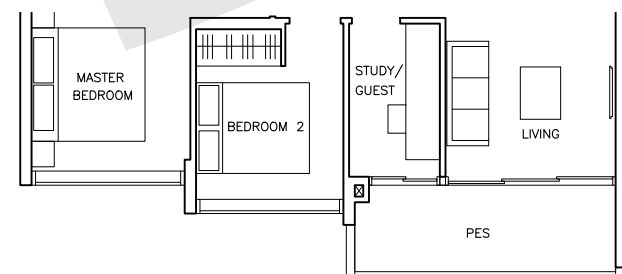
**MIRRORED**  
**BLOCK 6** #01-16  
**BLOCK 2** #01-06



TYPE C2a(p)

103 sqm (1109 sqft)

**BLOCK 4**  
 #01-09

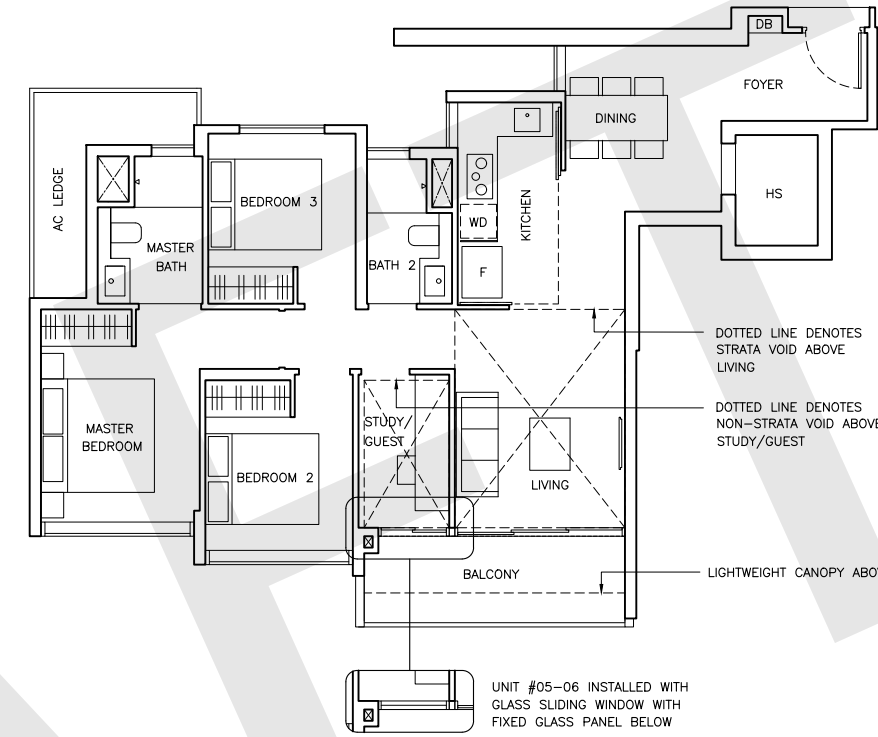


TYPE C2(PH)

116 sqm (1249 sqft)

Strata void area of 13 sqm / 140 sqft above living with high volume ceiling of 4600mm high.

**MIRRORED**  
**BLOCK 2** #05-06  
**BLOCK 4** #05-09  
**BLOCK 6** #05-16



NOTE

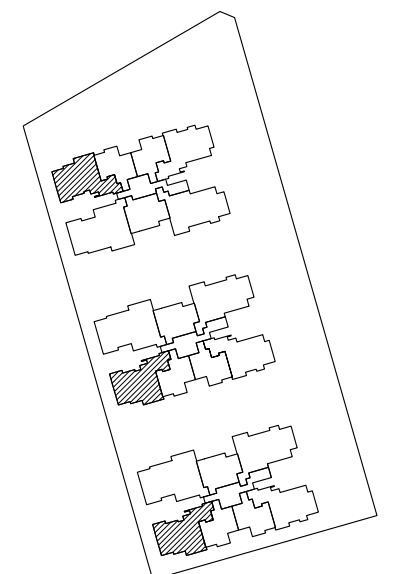
- Area includes AC ledge, balcony, private enclosed space(PES) and strata void (where applicable).
- The above plans and illustrations are subject to change as may be required or approved by the relevant authorities.
- All floor areas are approximate only and subject to final survey.
- Please refer to key plan for orientation.
- Service voids, RC ledge and RC trellis are excluded from strata area.
- The balcony shall not be enclosed. Only approved balcony screens are to be used. For an illustration of the approved balcony screen, please refer to page xx of this brochure.

LEGEND

- WD - Washer cum Dryer
- F - Fridge
- DB - Electrical Distribution Board
- ST - Store
- HS - Household Shelter
- AC Ledge - Air Conditioner Ledge



SCALE



KEY PLAN

# 4 BEDROOM CLASSIC

## TYPE D1

112 sqm (1206 sqft)

**BLOCK 4** #02-12 TO #04-12  
**BLOCK 6** #02-19 TO #04-19

**MIRRORED**  
**BLOCK 2** #02-03 TO #04-03

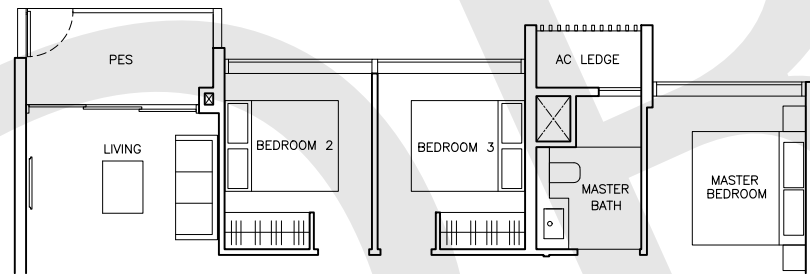


## TYPE D1(p)

112 sqm (1206 sqft)

**BLOCK 4** #01-12  
**BLOCK 6** #01-19

**MIRRORED**  
**BLOCK 2** #01-03



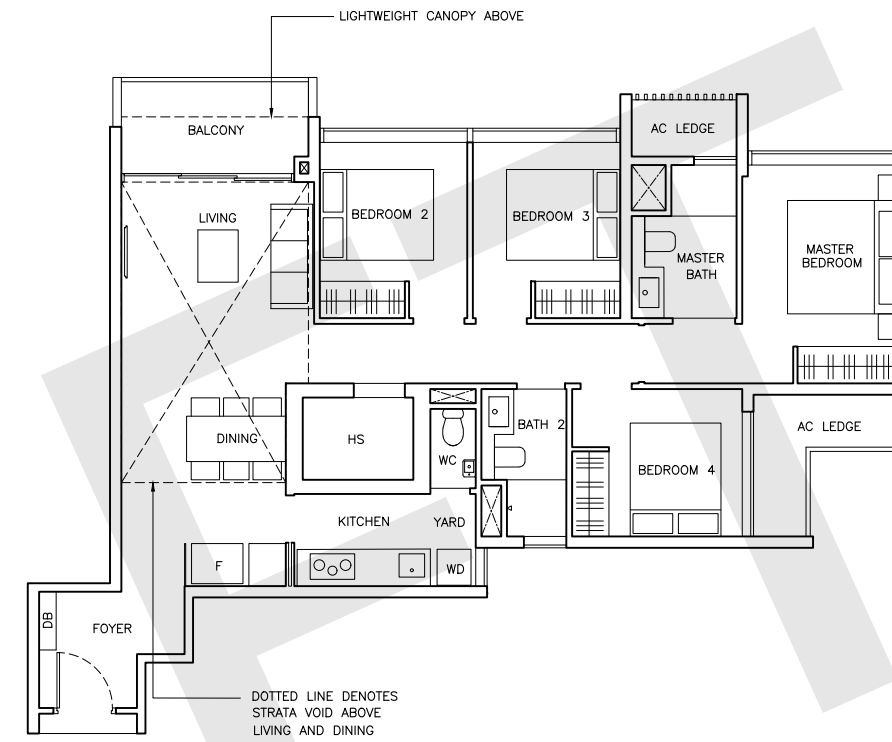
# 4 BEDROOM CLASSIC

## TYPE D1(PH)

131 sqm (1410 sqft)

Strata void area of 19 sqm / 204 sqft above living and dining with high volume ceiling of 4600mm high.

**MIRRORED**  
**BLOCK 2** #05-03  
**BLOCK 4** #05-12  
**BLOCK 6** #05-19



### NOTE

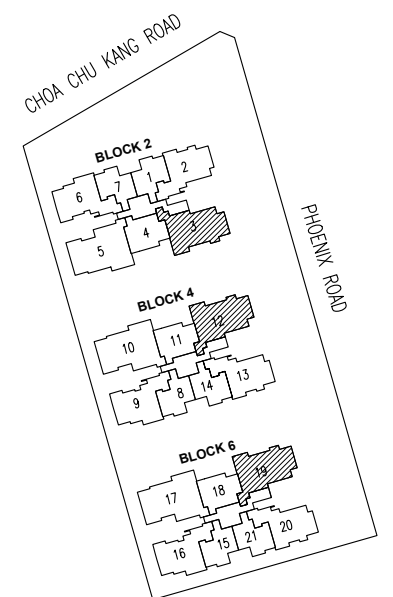
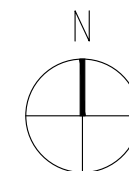
- Area includes AC ledge, balcony, private enclosed space(PES) and strata void (where applicable).
- The above plans and illustrations are subject to change as may be required or approved by the relevant authorities.
- All floor areas are approximate only and subject to final survey.
- Please refer to key plan for orientation.
- Service voids, RC ledge and RC trellis are excluded from strata area.
- The balcony shall not be enclosed. Only approved balcony screens are to be used. For an illustration of the approved balcony screen, please refer to page xx of this brochure.

### LEGEND

- WD - Washer cum Dryer
- F - Fridge
- DB - Electrical Distribution Board
- ST - Store
- HS - Household Shelter
- AC Ledge - Air Conditioner Ledge



### SCALE



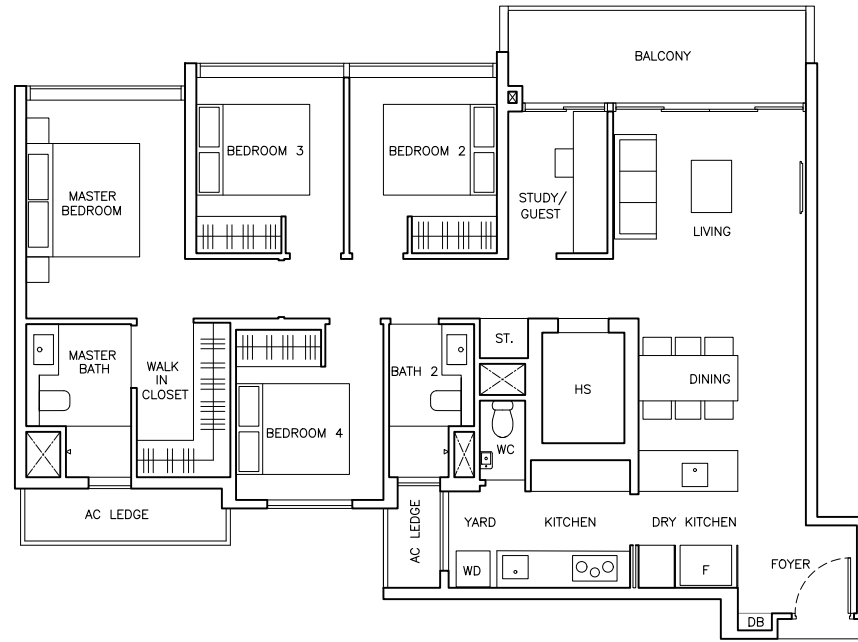
### KEY PLAN

NOT TO SCALE

TYPE D2

129 sqm (1389 sqft)

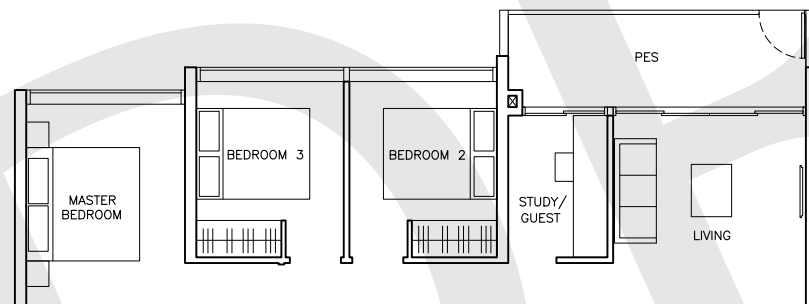
**MIRRORED**  
**BLOCK 4** #02-10 TO #04-10  
**BLOCK 2** #02-05 TO #04-05  
**BLOCK 6** #02-17 TO #04-17



TYPE D2(p)

129 sqm (1389 sqft)

**MIRRORED**  
**BLOCK 4** #01-10  
**BLOCK 2** #01-05  
**BLOCK 6** #01-17

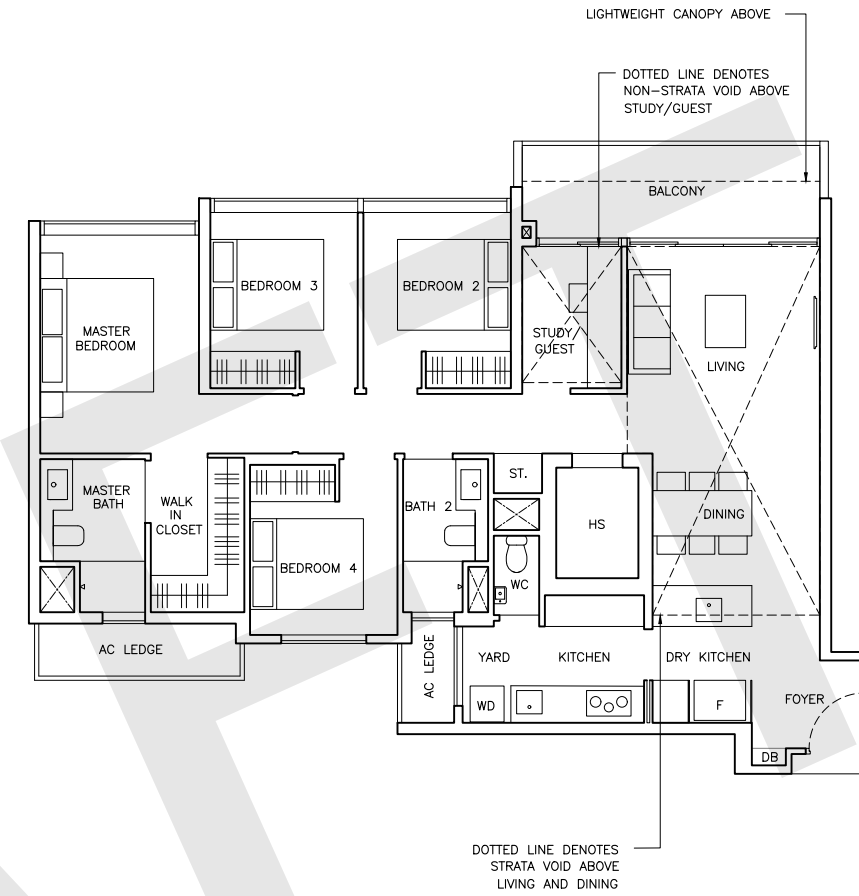


TYPE D2(PH)

152 sqm (1636 sqft)

Strata void area of 23 sqm / 247 sqft above living and dining with high volume ceiling of 4600mm high.

**MIRRORED**  
**BLOCK 2** #05-05  
**BLOCK 4** #05-10  
**BLOCK 6** #05-17

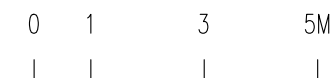


NOTE

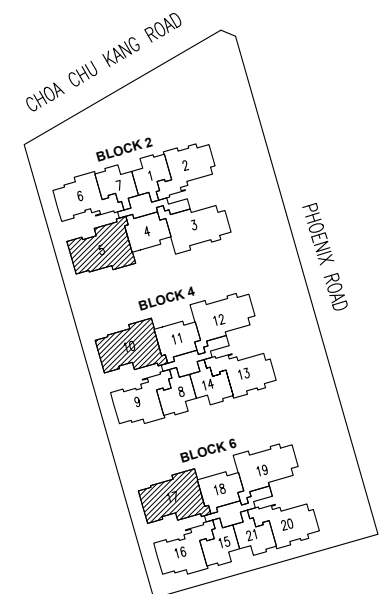
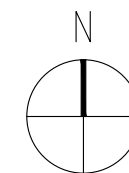
- Area includes AC ledge, balcony, private enclosed space(PES) and strata void (where applicable).
- The above plans and illustrations are subject to change as may be required or approved by the relevant authorities.
- All floor areas are approximate only and subject to final survey.
- Please refer to key plan for orientation.
- Service voids, RC ledge and RC trellis are excluded from strata area.
- The balcony shall not be enclosed. Only approved balcony screens are to be used. For an illustration of the approved balcony screen, please refer to page xx of this brochure.

LEGEND

- WD - Washer cum Dryer
- F - Fridge
- DB - Electrical Distribution Board
- ST - Store
- HS - Household Shelter
- AC Ledge - Air Conditioner Ledge



SCALE



KEY PLAN

NOT TO SCALE